

DESCRIPTION/USAGE

FDA Base includes all Type II and Type IV Drug and Veterinary Master Files (DMF/VMF) on file with the FDA, including corrections. FDA Base includes all approved drug applications by the FDA (NDA, ANDA, NADA, ANADA). Certificates of Suitability issued by the European Directorate of Quality Medicines are also included.

FDA Base is integrated to work with the Directory of World Chemical Producers (DWCP), thus allowing searches from within the DWCP. This allows you to know immediately if the producer has a DMF, VMF or COS on file for the raw material you want to source.

SCOPE/COVERAGE:

Currently includes:

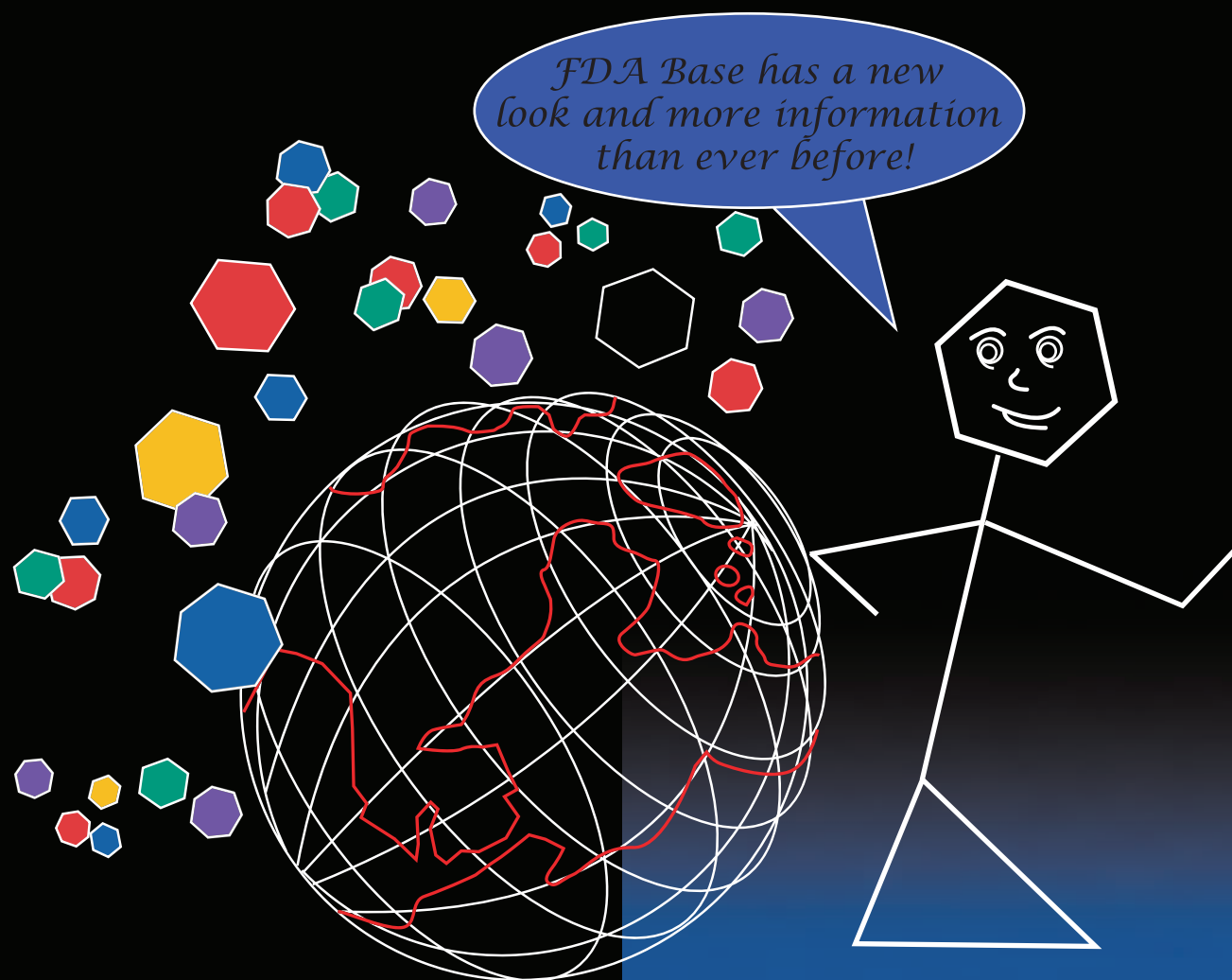
- *Over 7,100 DMF's, VMF's and Certificates of Suitability*
- *Over 15,600 human and veterinary approved drug applications (NDA, ANDA, NADA, ANADA)*

REQUIREMENTS:

- *Windows 98, NT, Me, 2000 or XP*
- *USB port*

FDA BASE™: A DMF, VMF & NDA CATALOGUE

FDA BASE™: A DMF, VMF & NDA CATALOGUE



Chemical Information
Services, Inc.

www.chemicalinfo.com
Tel: (214) 349-6200
Fax: (214) 349-6286



Chemical Information
Services, Inc.

When you need to find the holders of Drug Master Files (DMF), Veterinary Master Files (VMF), Certificates of Suitability or approved and abbreviated new drug applications (NDA, ANDA, NADA, ANADA), you need a resource that is:

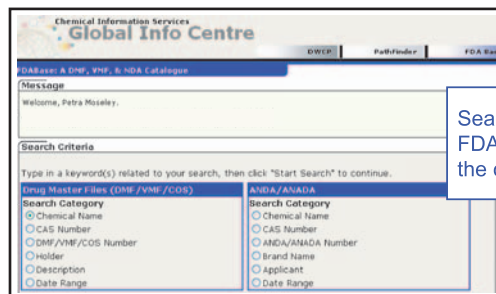
- Easy
- Reliable
- Accurate

Chemical Information Services' FDA Base is linked with the Directory of World Chemical Producers (Internet version). When searching for producers in the DWCP, you can see immediately, on the same screen, if a producer has a DMF, VMF or Certificate of Suitability on file for that chemical. FDA Base is available in the easy to use formats of:

- CD-Rom, updated 2 times per year
- Internet Access, updated monthly

To place an order or for more information, contact us at:
 Tel: 214 349-6200
 Fax: 214 349-6286
 Email: info@chemicalinfo.com
 Web: www.chemicalinfo.com

Search Screen.



Search the entire FDA Base by any of the categories shown.

FDA Base includes :

- * Type II DMFs
- * Type IV DMFs
- * VMFs
- * Certificates of Suitability
- * Human and veterinary drug approvals (NDA, NADA).

DMFs, VMFs & COSs.

DMF/VMF/COS Number	Chemical Name	Status	Type	Date
12917	ASTA-MEDCO	ACTIVE	VMF	03/06/1999
12918-12920	ASTA-MEDICAL INC	ACTIVE	DMF	03/06/1999
12921-12923	CADILA HEALTHCARE LTD. (ZYDUS GROUP)	ACTIVE	DMF	03/06/1999
12924-12926	USA LTD.	ACTIVE	DMF	03/06/1999
12927	USA LTD.	ACTIVE	DMF	03/06/1999
12928	DR. REDDY'S HOLDINGS LIMITED (CUSTOM CHEMICAL SERVICES)	ACTIVE	DMF	03/06/1999
12929-12930	DR. REDDY'S HOLDINGS LIMITED (CUSTOM CHEMICAL SERVICES)	ACTIVE	DMF	03/06/1999
12931	USA LTD.	ACTIVE	DMF	03/06/1999

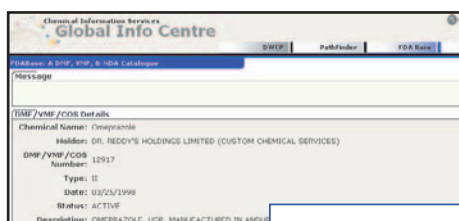
This screen shows DMF, VMF and COS holders for Omeprazole. The TYPE column tells you if they hold a DMF, VMF or COS.

NDA's.

NDA Number	Applicant	Product Name	Date
018245-01	EMPHAZOLE	EMPHAZOLE	11/08/2000
018245-02	EMPHAZOLE	EMPHAZOLE	11/08/2000
018245-03	EMPHAZOLE	EMPHAZOLE	11/08/2000
018245-04	EMPHAZOLE	EMPHAZOLE	11/08/2000
018245-05	EMPHAZOLE	EMPHAZOLE	11/08/2000
018245-06	EMPHAZOLE	EMPHAZOLE	11/08/2000
018245-07	EMPHAZOLE	EMPHAZOLE	11/08/2000
018245-08	EMPHAZOLE	EMPHAZOLE	11/08/2000
018245-09	EMPHAZOLE	EMPHAZOLE	11/08/2000
018245-10	EMPHAZOLE	EMPHAZOLE	11/08/2000
018245-11	EMPHAZOLE	EMPHAZOLE	11/08/2000
018245-12	EMPHAZOLE	EMPHAZOLE	11/08/2000
018245-13	EMPHAZOLE	EMPHAZOLE	11/08/2000
018245-14	EMPHAZOLE	EMPHAZOLE	11/08/2000
018245-15	EMPHAZOLE	EMPHAZOLE	11/08/2000
018245-16	EMPHAZOLE	EMPHAZOLE	11/08/2000
018245-17	EMPHAZOLE	EMPHAZOLE	11/08/2000
018245-18	EMPHAZOLE	EMPHAZOLE	11/08/2000
018245-19	EMPHAZOLE	EMPHAZOLE	11/08/2000
018245-20	EMPHAZOLE	EMPHAZOLE	11/08/2000
018245-21	EMPHAZOLE	EMPHAZOLE	11/08/2000
018245-22	EMPHAZOLE	EMPHAZOLE	11/08/2000
018245-23	EMPHAZOLE	EMPHAZOLE	11/08/2000
018245-24	EMPHAZOLE	EMPHAZOLE	11/08/2000
018245-25	EMPHAZOLE	EMPHAZOLE	11/08/2000
018245-26	EMPHAZOLE	EMPHAZOLE	11/08/2000
018245-27	EMPHAZOLE	EMPHAZOLE	11/08/2000
018245-28	EMPHAZOLE	EMPHAZOLE	11/08/2000
018245-29	EMPHAZOLE	EMPHAZOLE	11/08/2000
018245-30	EMPHAZOLE	EMPHAZOLE	11/08/2000
018245-31	EMPHAZOLE	EMPHAZOLE	11/08/2000
018245-32	EMPHAZOLE	EMPHAZOLE	11/08/2000
018245-33	EMPHAZOLE	EMPHAZOLE	11/08/2000
018245-34	EMPHAZOLE	EMPHAZOLE	11/08/2000
018245-35	EMPHAZOLE	EMPHAZOLE	11/08/2000
018245-36	EMPHAZOLE	EMPHAZOLE	11/08/2000
018245-37	EMPHAZOLE	EMPHAZOLE	11/08/2000
018245-38	EMPHAZOLE	EMPHAZOLE	11/08/2000
018245-39	EMPHAZOLE	EMPHAZOLE	11/08/2000
018245-40	EMPHAZOLE	EMPHAZOLE	11/08/2000
018245-41	EMPHAZOLE	EMPHAZOLE	11/08/2000
018245-42	EMPHAZOLE	EMPHAZOLE	11/08/2000
018245-43	EMPHAZOLE	EMPHAZOLE	11/08/2000
018245-44	EMPHAZOLE	EMPHAZOLE	11/08/2000
018245-45	EMPHAZOLE	EMPHAZOLE	11/08/2000
018245-46	EMPHAZOLE	EMPHAZOLE	11/08/2000
018245-47	EMPHAZOLE	EMPHAZOLE	11/08/2000
018245-48	EMPHAZOLE	EMPHAZOLE	11/08/2000
018245-49	EMPHAZOLE	EMPHAZOLE	11/08/2000
018245-50	EMPHAZOLE	EMPHAZOLE	11/08/2000
018245-51	EMPHAZOLE	EMPHAZOLE	11/08/2000
018245-52	EMPHAZOLE	EMPHAZOLE	11/08/2000
018245-53	EMPHAZOLE	EMPHAZOLE	11/08/2000
018245-54	EMPHAZOLE	EMPHAZOLE	11/08/2000
018245-55	EMPHAZOLE	EMPHAZOLE	11/08/2000
018245-56	EMPHAZOLE	EMPHAZOLE	11/08/2000
018245-57	EMPHAZOLE	EMPHAZOLE	11/08/2000
018245-58	EMPHAZOLE	EMPHAZOLE	11/08/2000
018245-59	EMPHAZOLE	EMPHAZOLE	11/08/2000
018245-60	EMPHAZOLE	EMPHAZOLE	11/08/2000
018245-61	EMPHAZOLE	EMPHAZOLE	11/08/2000
018245-62	EMPHAZOLE	EMPHAZOLE	11/08/2000
018245-63	EMPHAZOLE	EMPHAZOLE	11/08/2000
018245-64	EMPHAZOLE	EMPHAZOLE	11/08/2000
018245-65	EMPHAZOLE	EMPHAZOLE	11/08/2000
018245-66	EMPHAZOLE	EMPHAZOLE	11/08/2000
018245-67	EMPHAZOLE	EMPHAZOLE	11/08/2000
018245-68	EMPHAZOLE	EMPHAZOLE	11/08/2000
018245-69	EMPHAZOLE	EMPHAZOLE	11/08/2000
018245-70	EMPHAZOLE	EMPHAZOLE	11/08/2000
018245-71	EMPHAZOLE	EMPHAZOLE	11/08/2000
018245-72	EMPHAZOLE	EMPHAZOLE	11/08/2000

Human and veterinary approved drugs containing Omeprazole.

DMF / VMF / COS Details.



Details for the DMF, VMF or COS.

Producers from the DWCP.

Company Name	Country
Aashi Industries Ltd.	India
Alembic Limited (Formerly Alembic Chemical Works Co., Ltd.)	India
Aurobindo Pharma Limited	India
BDR Industries Ltd.	India
Bengal Chemicals & Pharmaceuticals Ltd.	India
Beta Naphthol Ltd.	India
Biochem Systems Ltd.	India
Black Peony Group Co., Ltd.	China
CADILA Healthcare Ltd. (Zydus Group)	India
Changzhou Jiangchun Chemical Plant	China
Changzhou Siyao Pharmaceuticals Co., Ltd.	China
Cipla Ltd.	India
CID Bio Corporation	Korea
Deewee Fine Chemical Co., Ltd. (Formerly Deeyoung Fine Chemical Co. Ltd)	China
Dr. Reddy's Holdings Limited (Formerly Chemical Resources)	India

This list of Omeprazole manufacturers is from the DWCP. The icon means that the company has a DMF, VMF or COS on file. Subscribers of both the DWCP and FDA Base can use the integration between the products.